

Lower Daulphin



MIDDLETOWN RD.

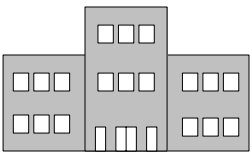
NOT TO SCALE
ONLY MAJOR ROADS LISTED

283



N. UNION

OBERLIN RD.



Middletown HS



DIRECTIONS TO LOWER DAUPHIN HIGH SCHOOL

From the Pennsylvania Turnpike (East and West)
Exit 19 - Harrisburg East Interchange.
Take 283 E to the Middletown/Hummelstown Exit
Turn left at stop sign.
Go approximately 2.5 miles
Lower Dauphin will be on the right.

From the South
Follow 83 N to 322 E to the Hummelstown Exit
At the top of the ramp - turn left
Lower Dauphin will be on the right.

From the East - Lebanon
Take 422 W to the Hummelstown/Middletown Exit
At the top of the ramp - turn left.
Cross over bridge and immediately turn right.
Go to the stop sign and turn right.
Lower Dauphin will be on the right.

From the Northeast (Lewistown)
Follow 22/322 E to 81 North/83 S & 322 E
(Follow Signs to Hershey)
Exit at Hummelstown.
At the top of the ramp - turn left.
Lower Dauphin will be on the right.

From the North and Northeast
78 W or 81 S (78 W becomes 81 S)
Take exit for interchange for Route 39.
At the top of the ramp, turn left.
Follow Route 39 E to Hersheypark Drive
Turn right onto Hersheypark Drive (which is Route 39.)
Route 39 ends at McDonald's in Hummelstown
Go about 500 feet, take ramp to the right for 322 W
Take the Hummelstown-Middletown Exit (about 1 mile), turn left
Cross over bridge and immediately turn right.
Go to the stop sign, turn right
Lower Dauphin will be on the right.

From the Southeast (Lancaster-Philadelphia)
283 West to Middletown/Hummelstown Exit
At top of the ramp bear right to stop sign and continue 2.5 miles
Lower Dauphin will be on the right

TO MIDDLETOWN AREA HIGH SCHOOL

From Points North

Take Interstate 83 South. From I-83, bear left onto Interstate 283. Continue on I-283 to PA 283 (right exit). Turn left onto PA 283. Take the first exit for Airport/PA 441. From PA 441 exit at Spring Garden Drive and turn left at the end of the ramp. Bear right onto Oberlin Road (Highway 441), and continue on Oberlin Road/441 as it turns right. Middletown Area High School is on the right.

From Points West

Take the PA Turnpike East to Exit 19. After you exit the turnpike, take the first exit for PA 283. Take the first exit for Airport/PA 441. From PA 441 exit at Spring Garden Drive and turn left at the end of the ramp. Bear right onto Oberlin Road (Highway 441), and continue on Oberlin Road/441 as it turns right. Middletown Area High School is on the right.

From Points East

Take the PA Turnpike West to Exit 19. After you exit the turnpike, take the first exit for PA 283. Take the first exit for Airport/PA 441. From PA 441 exit at Spring Garden Drive and turn left at the end of the ramp. Bear right onto Oberlin Road (Highway 441), and continue on Oberlin Road/441 as it turns right. Middletown Area High School is on the right.

From Points South

Take Interstate 83 North. From I-83 take I-283 Southeast. Continue on I-283 to PA 283 (right exit). Turn left onto PA 283. Take the first exit for Airport/PA 441. From PA 441 exit at Spring Garden Drive and turn left at the end of the ramp. Bear right onto Oberlin Road (Highway 441), and continue on Oberlin Road/441 as it turns right. Middletown Area High School is on the right.

TO HERSHEY PARK FROM MIDDLETOWN AREA HIGH SCHOOL

Turn left out of the parking lot onto North Union Street. Take the right side of the Y and continue on North Union Street. Turn right onto PA 283 East and take your first exit for Vine Street. Turn left at the traffic light, continue through one traffic light and turn right at the next light. Go through one more traffic light and merge onto the Route 322 Expressway. Take the second exit for Route 39 & Hersheypark Drive and follow the signs to the park.